

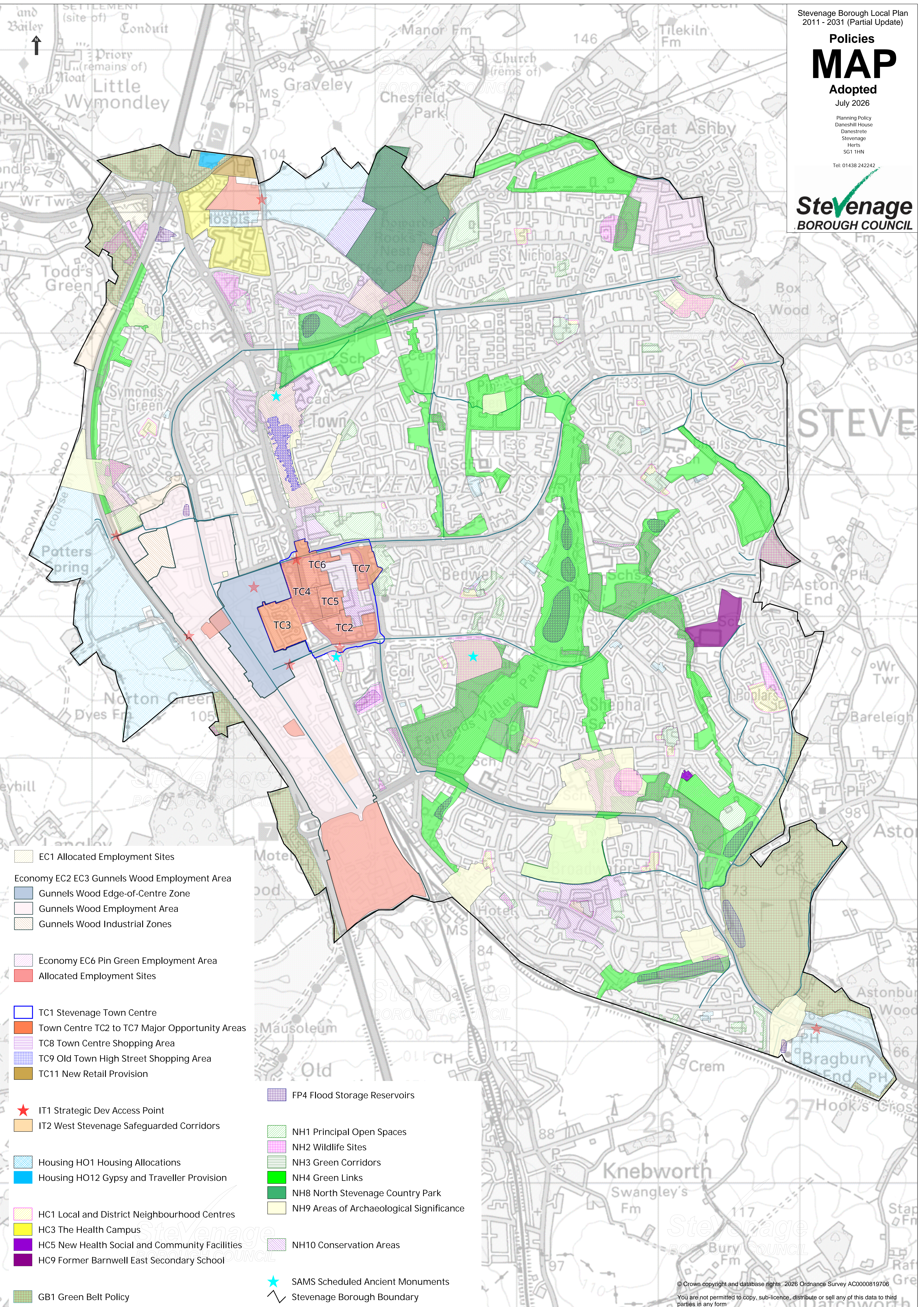
Policies MAP

Adopted
July 2026

Planning Policy
Daneshill House
Danestrete
Stevenage
Herts
SG1 1HN

Tel: 01438 242242

Stevenage
BOROUGH COUNCIL



- EC1 Allocated Employment Sites
- Economy EC2 EC3 Gunnels Wood Employment Area
- Gunnels Wood Edge-of-Centre Zone
- Gunnels Wood Employment Area
- Gunnels Wood Industrial Zones
- Economy EC6 Pin Green Employment Area
- Allocated Employment Sites
- TC1 Stevenage Town Centre
- Town Centre TC2 to TC7 Major Opportunity Areas
- TC8 Town Centre Shopping Area
- TC9 Old Town High Street Shopping Area
- TC11 New Retail Provision
- IT1 Strategic Dev Access Point
- IT2 West Stevenage Safeguarded Corridors
- Housing HO1 Housing Allocations
- Housing HO12 Gypsy and Traveller Provision
- HC1 Local and District Neighbourhood Centres
- HC3 The Health Campus
- HC5 New Health Social and Community Facilities
- HC9 Former Barnwell East Secondary School
- GB1 Green Belt Policy
- FP4 Flood Storage Reservoirs
- NH1 Principal Open Spaces
- NH2 Wildlife Sites
- NH3 Green Corridors
- NH4 Green Links
- NH8 North Stevenage Country Park
- NH9 Areas of Archaeological Significance
- NH10 Conservation Areas
- SAMS Scheduled Ancient Monuments
- Stevenage Borough Boundary